



Bretton Woods

2019 - 2020

WINTER GUIDE

**Ranked #12 Ski Resort in the
World by *Condé Nast Traveler*.**

Alpine and Nordic Skiing • Canopy Tour with Nine Zip Lines
Spa • Winter Biking • Sleigh Rides • Guided Winter Adventures
Snowshoeing • Indoor Climbing Wall • Fine and Casual Dining

Bretton Woods



**#1 IN THE EAST FOR SNOW,
GROOMING & SCENERY!**

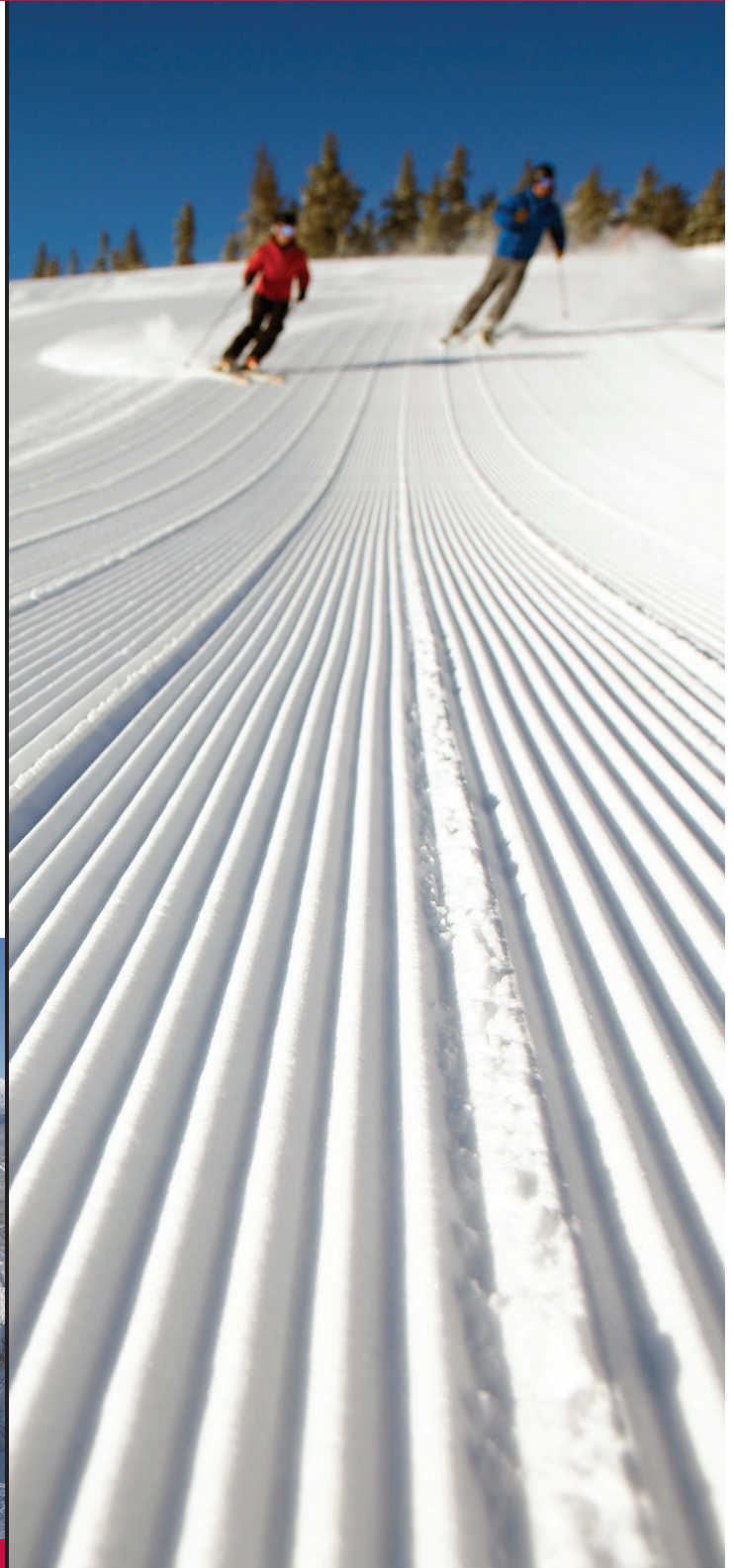
WINTER ADVENTURE AWAITS AT NEW HAMPSHIRE'S LARGEST SKI AREA.

Bretton Woods offers 464 acres of award-winning alpine skiing for every skill set, including over 10 miles of gladed terrain over three peaks. Or enjoy the tranquility and solitude of our 100-km Nordic trail network that delights snowshoers and skiers alike.

And when you book the "Stay Here, Ski Free" package at the renowned Omni Mount Washington Hotel, charming Omni Bretton Arms Inn or convenient Lodge and Townhomes at Bretton Woods, two adults ski or ride free at Bretton Woods! Visit brettonwoods.com or call (800) 843-6664 for details.

THERE'S SOMETHING FOR EVERYONE.

Guests of all ages can enjoy a world of winter activities, including sleigh rides, winter biking and more. Spend a relaxing afternoon in our full-service spa. Or for the ultimate winter thrill, try a Guided Adventure or the Bretton Woods Canopy Tour—a high-flying adventure in the trees and above the slopes.



Complete the *Bretton Woods* experience:

WINTER WITH US

ALPINE SKIING & RIDING



PAGE 1

ALPINE SPECIALS & RENTALS



BRETTON WOODS SKI SCHOOL

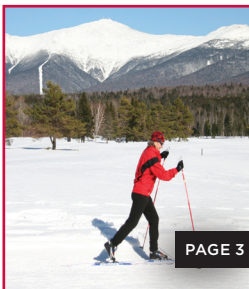


PAGE 2

BRETTON WOODS CHILDREN'S FUN

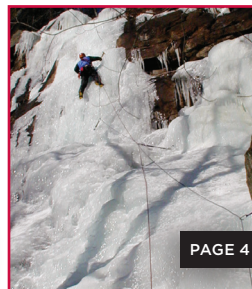


NORDIC SKIING & SNOWSHOEING



PAGE 3

GUIDED WINTER ADVENTURES



PAGE 4

ADAPTIVE PROGRAM



PAGE 5

OUTDOOR FUN



PAGE 5

FAT BIKES



PAGE 5

CANOPY TOUR

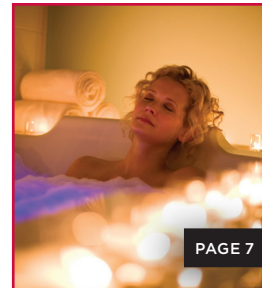


PAGE 6

SLOPESIDE CLIMBING WALL



THE SPA & MEMBERSHIP



PAGE 7

DINING



PAGE 8

SHOPPING



PAGE 9

SPECIALS



STAY
HERE,
PLAY
HERE

*All activities, events and rates subject to change without notice. Public access may be limited at times. Unless otherwise noted all rates are per person.



ALPINE LIFT TICKETS

Weekend/Holiday*	Adults (18-64)	Teens (13-17)	Juniors (5-12)	Seniors (65+)
Resort Guest (Full Day)	\$84	\$64	\$54	\$84
Full Day (8 am-4 pm)	\$104	\$74	\$59	\$98
Half Day (12 noon-4 pm)	\$84	\$64	\$54	\$84
Half Day Sunday (8 am-12 noon)	\$84	\$64	\$54	\$84
Twilight (2 pm-8 pm)	\$49	\$49	\$39	\$49
Night (4 pm-8 pm)	\$25	\$25	\$25	\$25
Learning Center Quad	\$20	\$20	\$20	\$20
Midweek/Non-Holiday				
Resort Guest (Full Day)	\$76	\$54	\$44	\$32
Full Day (9 am-4 pm)	\$88	\$64	\$49	\$32
Half Day (12 noon-4 pm)	\$78	\$54	\$44	\$32
Learning Center Quad	Free	Free	Free	Free

*Weekend/Holiday = Saturdays, Sundays, plus December 26 - 31, 2019; January 1, 2020; January 20, 2020; February 15 - 23, 2020. Twilight and night skiing offered Friday and Saturday nights from December 27 - March 14, plus special holiday night skiing on December 26 - 31, 2019; January 19, 2020 and February 16 - 20, 2020.

Multi-day ticket discounts available.

Children ages 4 and under receive a complimentary ticket when skiing or riding with a paying adult.

Seniors age 80+ may receive a complimentary all-mountain ticket anyway.

Ask about our Family Interchangeable Lift Ticket, which gives Mom and Dad the chance to take turns skiing and watching the kids.

SPECIAL OFFERS FOR SKIERS / RIDERS

Two-For-One Wednesdays: \$88

Two people ski or ride for the price of one adult during non-holiday periods.

Powder & Pasta: \$29

Ski or ride from 4pm-close and enjoy a pasta dinner Friday & Saturday nights, Dec. 27-March 14, plus during holiday periods Dec. 26-31, Jan. 19 & Feb. 16-20.

Next Day Upgrade: \$60

Upgrade your Sunday-Thursday non-holiday ticket by 4pm and ski the next day for \$60.

Military Rates

Available to active duty and retired military personnel and their dependents with a valid military ID.



EQUIPMENT RENTAL

Skis, Boots, Poles & Helmet/ Snowboard, Boots & Helmet	Adults (13+)	Juniors (5-12) Seniors (65+)
Full Day	\$49	\$37
Additional Day	\$38	\$29
Twilight (2 pm-8 pm)	\$39	\$29
Night (4 pm-8 pm)	\$29	\$24

DEMO PROGRAM | DAILY \$59 | SEASON \$600

The Demo Program allows you access to a selection of the latest skis from Salomon, Head, Rossignol and Elan-from a wide ski for those powder days or a sleek carving ski for wide-open cruising.

BRETTON WOODS REPAIR SHOP

Basic Quick Tune: \$30-Belt grind, edge sharpening and belt wax

5 Quick Tunes Card: \$99

Deluxe Full Tune: \$50-Stone grind, ceramic disc edge sharpening and belt wax

Performance Tune: \$70-Belt grind, stone grind, simple base repair, hand edge sharpening and hand wax

Binding Mounting or Remounting System: \$35

Binding Mounting or Remounting Drill: \$45

Binding Adjustment & Testing: \$30

***Resort Guests receive \$4 off above RENTAL & REPAIR prices! Plus, save time in line and pick up your rentals the night before. Available Fridays, Saturdays and holiday periods. Does not apply to ski school packages.**



BRETTON WOODS SKI & SNOWBOARD SCHOOL

Red Carpet Learn to Ski or Burton Learn to Ride: \$89
For ages 13 and older, offered daily at 10 am and 1 pm.
Includes ski or board rental, a group lesson and unlimited access to the Learning Center Quad.

Mountain Skier or Rider Package: \$159
For ages 13 and older, offered daily at 10 am and 1 pm.
Includes ski or board rental, one intermediate group lesson and an all-mountain lift ticket.

Call (603) 278-3303 for all alpine ski school reservations and information.

LESSON RATES			
	Time	Length	Cost
Group Lessons	10 am or 1 pm	1.5 Hours	\$55
Private Lessons	9 am, 12 noon or 3 pm	1 Hour	\$139
Semi-Private Lessons (rates based on 2pp)	9 am, 12 noon or 3 pm	1 Hour	\$259



CHILDREN'S FUN

Our popular children's programs fill up quickly, and space is limited. Reservations are required; call (603) 278-3303.

Hobbit Ski and Snowboard School**

Introduce your kids to the fun of skiing and riding at the Kids' Alpine Club next to the Base Lodge, where they'll be grouped together by age and ability. Program includes supervision, lessons, lift tickets and lunch.

Ski Program (ages 4-12) or Snowboard Program (ages 6-12)**

Full Day: \$149 (8 am-3 pm)

Half Day: \$109 (8 am-12 noon)

Add rental equipment to package: \$30
(Lunch included with Full Day only)

Two-hour lesson only: \$70 (10 am)

Ski and Snowplay Program (ages 3-5)**

Show your kids how much fun the snow can be. Program includes nursery supervision, lunch and lessons. Children must be potty-trained and properly attired.

Full Day: \$149 (8 am-4:30 pm)

Half Day: \$109 (8 am-12 noon)

Add rental equipment to package: \$30
(Lunch included with Full Day only)

Babes in the Woods Nursery (ages 2 months-5 years)**

Enjoy a worry-free day on the slopes while our caring staff entertains your child with games, storytelling and crafts. Lunch and snacks included.

Full Day: \$100 (8 am-4:30 pm)

Half Day: \$70 (8 am-12 noon or 12:30-4:30 pm)
(Lunch included with Full Day only)

Children's Après-Ski Parties

Kids 4-12 are welcome to join in on the après-ski fun on Saturdays, December 14-March 28 and daily during holiday periods 3:30-5 pm. Parties include games, activities and refreshments and are fully supervised so parents can enjoy adult après-ski fun in the Slopeside Pub.



**Reservations will be charged 48hrs prior to arrival date. Holidays and vacations weeks may be charged up to 7 days prior.

Cancellations or changes made less than 48 hours prior to arrival will receive a full refund less a \$35 processing fee.

Cancellations or changes made less than 24 hours will forfeit the full cost of reserved activity, including those due to inclement weather or snow conditions.

NORDIC SKIING AND SNOWSHOEING



NORDIC PASS RATES, RENTALS AND CLASSES

	Adults (18-64)	Teens (13-17)	Juniors (5-12)	Seniors (65+)
Daily Trail Pass	\$14	\$12	\$7	\$7
Resort Guest	\$21	\$19	\$14	\$14
Public				
Touring or Skate	\$20	\$20	\$15	\$15
Ski Rental				
High Performance	\$25	\$25	\$20	\$20
Snowshoe Rental	\$20	\$20	\$15	\$15
Chairlift Ride to Mountain Road Trail: \$10 plus Nordic Trail pass; must be on lift by 2:30 pm				
Group Lesson**	\$20	\$20	\$20	\$20

**Lessons last approximately 1 hour. Reservations recommended. Half day rentals available - please inquire.

Intro to Nordic Skiing Package:

Adult/Teen: \$45; **Junior/Senior:** \$35

Includes trail pass, touring ski rentals and one-hour group lesson.

Ski with a Pro Instruction & Tours:

1.5-hour: \$60/private; \$80/2pp semi-private; \$40 for each additional person (maximum four people)

2-hour: \$80/private; \$120/2pp semi-private; \$60 for each additional person (maximum four people)

Our expert instructors offer custom instruction and tours to individuals and groups who want to hone their skills and explore our vast trail network.

Guided Showshoe Tour: \$45 per person

Enjoy a guided tour and enjoy the serenity of the forest, inspiring views and a rewarding cup of cocoa at the end of your tour. Rate includes trail pass and rentals; other options available - please inquire. Call (603) 278-3322 to reserve.

High Country Nordic Ski & Snowshoe Trails: \$31 per person. Enjoy lift-serviced, mountaintop Nordic ski & snowshoe trails. Includes trail access and single-ride lift ticket. Nordic skiers may also enjoy unlimited use of the Telegraph T-Bar on Mt. Stickney. Snowshoe rentals available at the alpine Rental Shop in the Base Lodge for additional fee.

Pulk Rental: Full Day/Half Day \$25/17



Event Sampler

Learn to Ski MonthJan. 1-31
Ski the Geschmossel Self-Guided Tour.....Jan. 19
Annual Geschmossel Classic Ski Race Jan. 20
Veterans Appreciation DayJan. 25
NH Boys & Girls Club DayFeb. 2
Annual Mount Washington Cup Mar. 7
Nordic Race
Bretton Woods Nordic Marathon..... Mar. 8

Nordic Specials

Two-for-One Day - 2 ski for \$21Wednesdays
(during non-holiday periods)

Our Gift to You - 2-4-\$21 Nordic Tix Dec. 25

Learn to Ski Free Week.....Jan. 5-10

Big Game Special - 4 Nordic Tix. for \$54..... Feb. 2

Leap Year Feb. 29

All Leap Year babies born Feb. 29 ski for FREE with valid ID

St. Patty's Day Mar. 17

Save some green with a friend - buy one adult trail pass at regular rate, get a second same-day ticket for just \$17

Call (603) 278-3322 for Nordic information and lesson reservations. For ski conditions, call (603) 278-4414.



GUIDED WINTER ADVENTURES

Take a step toward a more adventurous winter! Whether you are looking for a way to get a good outdoor workout or learn new skills to help you explore the backcountry, we have a program for you. Call (603) 278-3335, email mwcanopydesk@omnihotels.com or visit the Canopy Tour Building for more information. Deposits and cancellation policies apply for all guided adventures. Please inquire at time of booking.

Backcountry Skiing

If you are looking for an adventure beyond the groomed trails, we have a backcountry skiing adventure for you. Beginners will learn the basics and get a taste of this exciting sport, while more seasoned skiers will explore some of the best backcountry terrain in the East.

Introduction to Backcountry Skiing

Private (one person): \$150

Semi-Private (two people): \$125 per person

Three people: \$100 per person

Guided Backcountry Skiing

Private (one person): \$300 and up

Semi-Private (two people): \$185 per person

Three people: \$150 per person

Maximum 3 guests per guide. Equipment rental is available.



Snowshoe Expeditions

Explore a nearby mountain and experience the wonders of the winter forest. This is a great way to get some exercise off the beaten path as you learn about winter backcountry safety and equipment while enjoying stunning mountain scenery.

Private (one person): \$300 and up

Semi-Private (two people): \$185 per person

Three people: \$150 per person

Maximum 3 guests per guide. Equipment rental is available. Participants should be in good physical condition and health.



Ice Climbing

Learn how to climb frozen waterfalls in this exciting adventure. You'll learn how to use ice axes, crampons and a climbing rope to ascend frozen waterfalls. It's a lot of fun and you'll want to come back for more once you're "hooked". This adventure is suitable for anyone in average physical condition and good health. More advanced guided ice climbing is available for guests with previous experience.

Private (one person): \$300 and up

Semi-Private (two people): \$185 per person

Three people: \$150 per person

Maximum 3 guests per guide



Mount Washington Winter Ascent

Join us for one of the most exciting adventures in the northeast. Climbing Mount Washington in the winter is an all-day experience that will test you physically and mentally, and will be an experience you'll remember for the rest of your life. Climbers should be in very good physical condition and must be properly equipped. Other winter hiking options also available.

Private (one person): \$350 and up

Semi-Private (two or three people): \$185 per person

Maximum 3 guests per guide.





Sleigh Rides

Enjoy the winter wonderland in your own horse-drawn sleigh. Advanced reservations encouraged. Please call (603) 278-8989.

ONE-HORSE SLEIGH	Resort Guest	Public
Half-Hour Private	\$95/couple	\$105/couple
Half-Hour Semi-Private		
Adult, age 13+	\$25	\$30
Child, ages 4-12	\$20	\$25
Lap Child, ages 3 & under*	Complimentary	Complimentary
TWO-HORSE GROUP SLEIGH	Resort Guest	Public
Adult	\$20	\$25
Child	\$15	\$20

*1 complimentary child age 4 & under on adult lap. Additional children pay child price.



Fat Tire Bikes

The most winter fun on two wheels! Rentals and trail passes available at the Nordic Center. Trail passes also available at the Demo Center in the Alpine Base Lodge. Call (603) 278-4437 for more information.

RENTALS	Resort Guest	Public
1 Hour	\$20	\$30
2 Hour	\$30	\$40
Half Day (4 Hours)	\$40	\$50
Full Day	\$50	\$60
Bike rental fee includes Trail Pass		
TRAIL PASS	Resort Guest	Public
Adult (18-64)	\$14	\$21
Teen (13-17)	\$12	\$19
Child (5-12)	\$7	\$14
Senior (65-79)	\$7	\$14
Senior (80+)	Complimentary	Complimentary



Many of our resort activities are great for group outings and team building!
For information and group rates, please email mwsales@omnihotels.com or call (603) 278-8813.

ADAPTIVE PROGRAM

New England Disabled Sports at Bretton Woods provides adaptive sports instruction to adults and children with physical and cognitive disabilities. Our programs allow individuals with disabilities to enjoy a boundary-free environment, outdoor recreation with friends and family and provide access to equipment and instruction. From a first timer to the most experienced athlete, we have something for you. For lessons and further information please contact New England Disabled Sports at Bretton Woods at nedisabledsports.org or call (603) 278-3398.



*All activities, events and rates subject to change without notice. Public access may be limited at times. Unless otherwise noted all rates are per person.

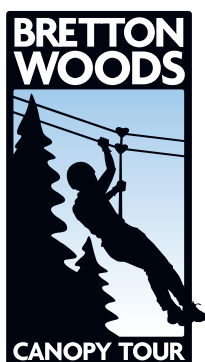


BRETTON WOODS CANOPY TOUR

(ages 12+)*

One of *Yankee Magazine's* Editors' Picks for Unforgettable Guided Adventures!

Descending over 1,000 feet of elevation, the tour takes nature-lovers and thrill-seekers across a series of 9 treetop zip lines, and is one of the longest zip line canopy tours in New England. Suspension bridges and hiking trails connect the high-flying zip lines.



All in all, a unique year-round experience not to be missed! Tours offered daily. Reservations required; call (603) 278-4ZIP (4947) for reservations.

All Guests: \$99

*Minimum height is 4'6", must weigh 90-250 pounds and fit securely in the harness.



Slopeside Climbing Wall Season Pass
just \$149! Ask for details.



ZIP & SKI

Now enjoy two of our favorite winter activities at great combo rates!

Zip & Ski: \$110* Canopy Tour and Full Day of Skiing or Riding

Call (603) 278-4ZIP (4947) for reservations.

*Canopy Tour reservations required, and cancellation policies apply. Subject to availability during the 2019-20 ski season. Some blackout dates may apply. Activities must be consumed on same day or consecutive days by the same person. May not be combined with other offers, packages or promotions.

SLOPESIDE CLIMBING WALL

(recommended for ages 5+)

The Slopeside Climbing Wall is a year-round indoor climbing experience located on the lofty Slopeside level of the Bretton Woods Base Lodge. With routes up to 30 feet for beginners to experts, our staff will ensure everyone in the family has a fun afternoon – rain, shine or snow! Also explore the 300 square foot Bouldering Cave for more fun closer to the ground.

Offered:

Daily Mid-November thru Mid-April; visit brettonwoods.com for schedule.

Climbing Wall or Bouldering Cave:

\$15 for 10 minutes

Guests may climb in clean sneakers or rent climbing shoes for \$3.



THE SPA

Rejuvenate yourself at the start of a new day or unwind after a full day exploring the resort with a relaxing massage or specialty treatment by one of our licensed therapists. You'll not only enhance your vacation, you might forget why you needed one in the first place.

Please ask for a complete brochure of spa services, or visit omnihotels.com/mountwashington

To reserve your escape, call (603) 278-4286.

"One of the Top 12 Spas in New England"

-Boston Magazine



THE SPA



BWC

BRETTON WOODS CLUB

— 1895 —

BECOME A MEMBER

A Bretton Woods Club membership provides you and your family with year-round access to the outstanding facilities of the historic Omni Mount Washington Resort. For more information or to learn about our "Member for a Day" program, please contact brettonwoods.com/club or call (603) 278-1120.





FARE FROM SUMMIT TO BASE

From a four-course meal with that special someone to a casual cocktail with friends, dining at the Omni Mount Washington Resort is a feast for all your senses and a treat that will take you back to a grander time.

AT THE OMNI MOUNT WASHINGTON HOTEL

Main Dining Room

This comfortably welcoming, family-friendly Four Diamond Restaurant serves hearty breakfast daily, plus New England classics and modern culinary trends for dinner, complete with musical accompaniment for the listening and dancing pleasure of couples and families alike. *Dinner dress: Appropriate attire includes pressed slacks, dressy denim, Bermuda length shorts and collared shirts. Gentlemen should feel comfortable wearing a seasonal sport coat or blazer if they desire. Please no athletic wear, pool attire or gentlemen's hats.**

Stickney's Steak & Chop Pub

Our popular pub and steakhouse features delectable steaks and chops plus regional favorites.*

Rosebrook Bar

Enjoy small bites and handcrafted cocktails in this cozy bar with breathtaking mountains views. Located just off the Great Hall.

Princess Room

Enjoy an extensive whiskey, wine and cocktail menu. Located near the Main Dining Room. Also enjoy afternoon tea on Fridays and Saturdays.*

The Cave

Take a sip back in time! Don't miss this former speakeasy's atmosphere while you enjoy live music on select evenings or a game on our big screens. Located across from Stickney's on the hotel patio level.

**Please call Ext. 8989 for dinner reservations for the Main Dining Room, Stickney's and Bretton Arms, as well as weekend Tea in the Princess Room.*

AT THE OMNI BRETTON ARMS INN

Bretton Arms Inn Dining Room & Wine Bar

No visit to the Omni Mount Washington Resort is complete without enjoying the Four Diamond cuisine, award-winning wine list and gracious service of this casually upscale inn.*

AT BRETTON WOODS

Latitude 44°

Skiers and riders can take a scenic chairlift ride near the summit of New Hampshire's largest ski area for a full lunch menu and expansive views of the surrounding mountains. Open seasonally.

Mount Stickney Cabin

Take a break from exploring Mt. Stickney and enjoy a hot chocolate, frosty beverage, soup or snack while the kids roast marshmallows outdoors.

Slopeside Restaurant & Pub

Gather for lunch or an après-ski party in this classic post-and-beam setting. Conveniently located in the Base Lodge, this restaurant offers appetizers and a full lunch menu, plus libations during night skiing.

Lucy Crawford's Food Court

Located in the Base Lodge, Lucy's serves breakfast, lunch and snacks for skiers and riders on the go plus snacks, burgers and "Powder & Pasta" special during night skiing.

Waffle Cabin

Offering warm, authentic Belgian sugar waffles, plus hot and cold beverages.

AND NEAR IT ALL

Fabyan's Station

Once visited by all train travelers to Mount Washington, this casual restaurant and pub is right across from the Bretton Woods alpine area, and offers great burgers, BBQ, smokehouse dishes and local brews.

The Grille

Escape from the cold and warm up with a hot cup of soup and a hearty sandwich served fireside at the Nordic Center. Open seasonally.



SHOPPING

LOCATED AT THE HOTEL

Cabot's

This gift shop includes sportswear, logo souvenirs and sundries. Located near Stickney's Steak & Chop Pub.

Critters

Let your child's imagination run wild with fun critter-creations plus unique clothes and toys. Located in Stickney Square.

Sterling Works

Choose from a variety of unique, quality sterling jewelry. Located in Stickney Square.

Signature Shop

Take home a resort logo'd keepsake. Located in the Great Hall.



LOCATED AT BRETTON WOODS

TreeTop Sports

Shop for the best in ski apparel and accessories. Located on the second floor of Bretton Woods Base Lodge.

Nash's General Store

Purchase logo wear and basic essentials. Located on the lower level of the Bretton Woods Base Lodge.

Chutters on the Mountain

Stop by the top of the Zephyr quad lift for candy favorites. A delight for any sweet tooth.

LOCATED AT THE NORDIC CENTER

TreeTop Nordic

For Nordic skiers, this shop offers a variety of quality apparel and equipment.

VISIT BRETTON WOODS

Distance (in miles)
from:

Boston, MA160
Burlington, VT115
Hartford, CT240
Lincoln, NH30
Manchester, NH105
Montreal, QC185
New York, NY350
North Conway, NH30
Portland, ME95
Portsmouth, NH115
Providence, RI210



Just 30 minutes
from North Conway
& Lincoln NH!

SEASON LONG SPECIALS

2-4-1 Wednesdays

Two adults ski or ride for \$88 during non-holiday periods or enjoy two Nordic tickets for \$21.

\$29 Powder & Pasta

Ski or ride from 4pm-close and enjoy a pasta dinner Friday & Saturday nights, December 27 - March 14, plus nightly during holiday periods. Or get on the slopes starting at 2pm for \$53.

\$60 Next Day Upgrade

Upgrade your Sunday-Thursday non-holiday ticket by 4pm and ski the next day for \$60.

\$110 Zip & Ski

Hit the slopes then soar above them on the Bretton Woods Canopy Tour.

SPECIAL DAYS

\$50 Christmas Day, December 25

Our gift to you! Hit the slopes for just \$50, or enjoy two-for-one Nordic tickets. Open 10am-4pm.

MLK Monday Madness, January 20

Celebrate with \$79 tickets when purchased in advance online.

The Big Game, February 2

Ski or ride for \$54 before cheering on your favorite team, or enjoy four Nordic tickets for just \$54.

Leap Year, February 29

All Leap Year babies born February 29 ski for FREE with valid ID.

St. Patty's Day, March 17

Save some green with a friend - buy one adult ticket at regular rate, get a second same-day ticket for just \$17.

Beach Party, March 28

Wear beach attire and hit the slopes for just \$35.

Patriot's Day, April 20

Join us for our final day of the 2019-20 season with \$17.76 tickets AND receive a return voucher to kick off next season.

*All specials valid through 2019-20 ski season and are subject to change without notice. May not be combined with other offers or promotions. Patriot's Day return voucher valid through Dec. 11, 2020.

For more details on activities and events, please call (800) 258-0330 or visit brettonwoods.com

For lodging and other resort information, call (800) 843-6664 or visit brettonwoods.com/lodging

OMNI RESORTS
mount washington | new hampshire

LET'S GET
SOCIAL



[brettonwoodsnh](https://www.facebook.com/brettonwoodsnh)



[SnowyBW](https://www.youtube.com/user/SnowyBW)



[bretton_woods](https://twitter.com/bretton_woods)



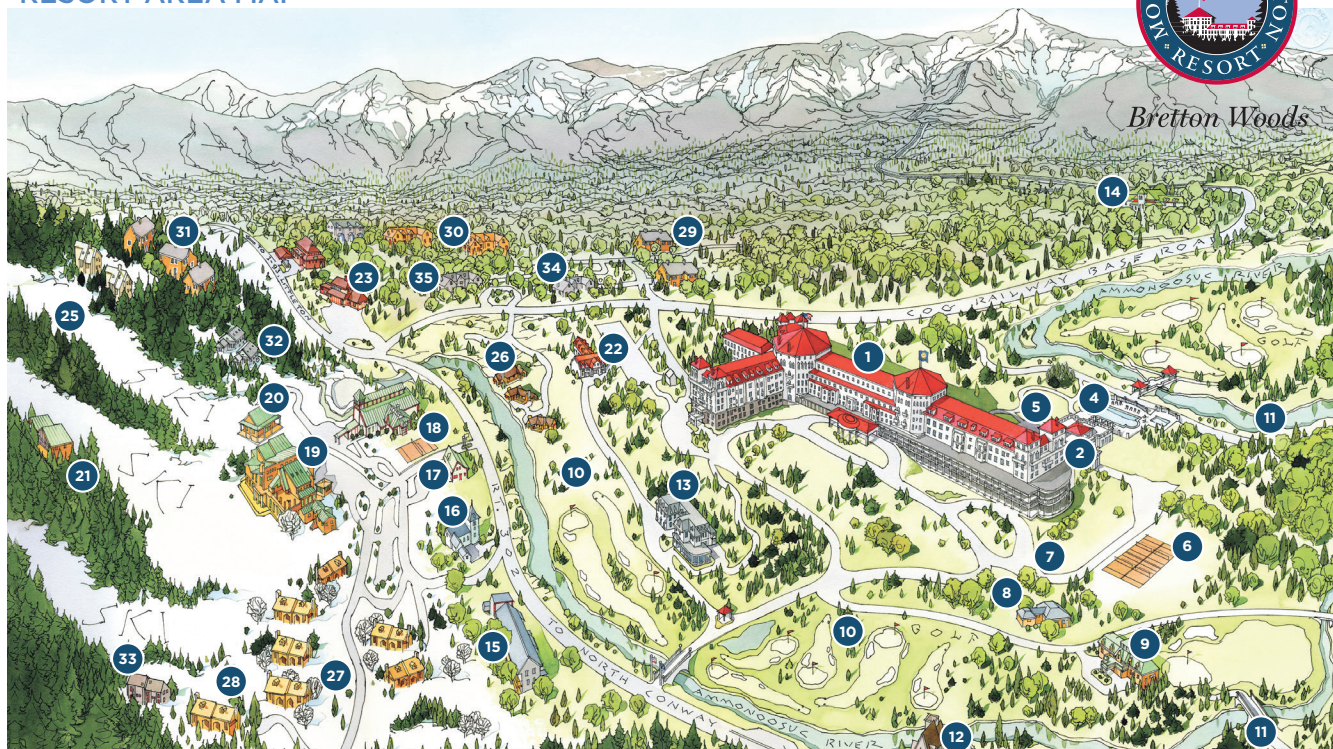
[brettonwoodsnh](https://www.instagram.com/brettonwoodsnh)

SHARE YOUR #DAYATTHEWOODS

*All activities, events and rates subject to change without notice. Public access may be limited at times. Unless otherwise noted all rates are per person.



RESORT AREA MAP



ACTIVITIES

- 1 Omni Mount Washington Hotel (Activities Concierge, carriage/sleigh rides, hotel tours, Omni Kids Childcare Center, indoor pool, daily activities)
- 2 The Spa
- 5 Firepit
- 6 Tennis & Pickleball Courts
- 7 Tubing Hill (winter)
- 8 Stone Pillar Lodge (seasonal - biking, fishing, snow tubing)
- 9 Golf Clubhouse/Nordic Center (seasonal)
- 10 Mt. Pleasant 9-hole Golf Course
- 11 Mt. Washington 18-hole Golf Course
- 14 Mt. Washington Cog Railway
- 15 The Lodge at Bretton Woods (indoor pool, fitness center)
- 19 Bretton Woods Base Lodge/Adventure Center (seasonal - alpine skiing, snowshoeing, scenic gondola rides, indoor & outdoor climbing, mountain biking, disc golf, ATV tours, kids' go kart & snowmobile parks, river tube rentals, archery, Fabyan Fields)
- 20 Bretton Woods Canopy Tour
- 22 The Stables

DINING & COCKTAILS

- 1 Omni Mount Washington Hotel (Main Dining Room, Stickney's Steak & Chop Pub, Rosebrook Bar, Princess Room, Morsels, The Cave)
- 9 The Grille (seasonal)
- 13 Omni Bretton Arms Inn & Wine Bar
- 19 Bretton Woods Base Lodge/Adventure Center (seasonal - Slopeside Restaurant & Pub, Lucy Crawford's Kitchen)
- 21 Latitude 44° Restaurant (seasonal)
- 23 Fabyan's Station Restaurant

SHOPPING

- 1 Omni Mount Washington Hotel (Cabot's, Critters, The Spa, Signature Shop, Sterling Works)
- 9 TreeTop Golf/Nordic (seasonal)
- 15 Mt. Pleasant Market (at The Lodge at Bretton Woods)
- 19 Bretton Woods Base Lodge/Adventure Center (seasonal - TreeTop Sports, Nash's General Store, Chutters)

CONFERENCE

- 2 Conference Center

LODGING

- 1 Omni Mount Washington Hotel
- 13 Omni Bretton Arms Inn
- 15 The Lodge at Bretton Woods
- 15 Townhome Check-in (at The Lodge)
- 25 Crawford Ridge
- 26 Fairway Village
- 27 Forest Cottage
- 28 Mountain Views
- 29 Mt. Madison
- 30 Mt. Washington Place
- 31 Presidential Views
- 32 River's Edge
- 33 Rosebrook
- 34 Stickney Circle
- 35 Stonehill

CHURCHES

- 12 Stickney Memorial Chapel (summer Episcopal services)
- 16 Our Lady of the Mountains Shrine (summer Catholic services)

REAL ESTATE

- 17 Real Estate Office

COMPLIMENTARY SHUTTLE SERVICE IS PROVIDED THROUGHOUT THE RESORT.

Please refer to The Bugle insert for current offerings and hours of operation.



New On-Mountain
Restaurant & Event Venue

COMING SUMMER 2020!

Book your wedding or event
today. Call (603) 278-8813.